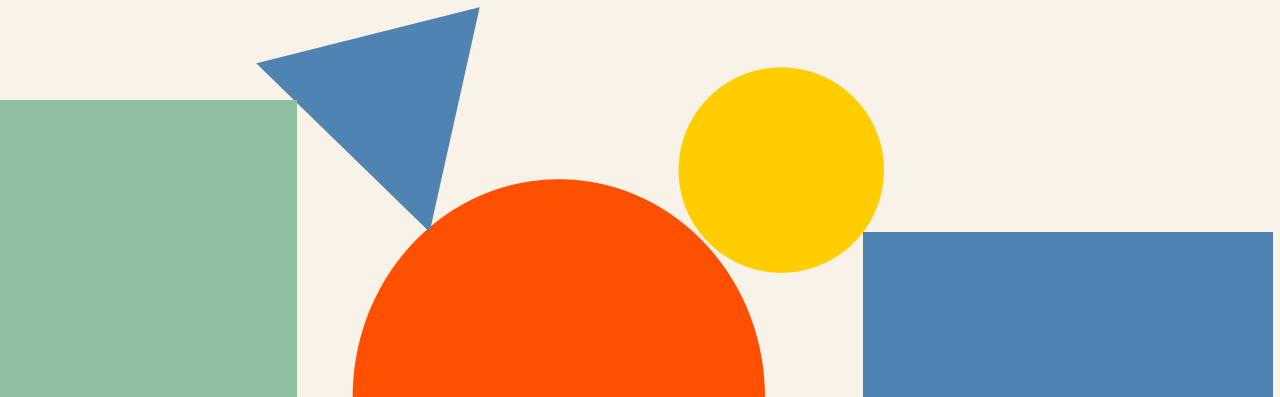


SUPPORT FOR EARLY CHILDHOOD EDUCATORS PAY RISE

Essential Omnibus Poll Results
August 2024



**THRIVE
BY FIVE**

KEY FINDINGS.

Support for government funding for a 15% pay rise for early childhood educators

Around six in 10 Australians support the Federal Government funding a 15% pay rise for early childhood educators over the next two years. Support is slightly higher among those with dependents (61%) compared to those without dependents (57%).

Women are slightly more likely to support the pay rise than men (61% vs. 56%) and seven in 10 Greens voters and almost two-thirds (64%) of Labor voters support the pay rise compared to 52% of Coalition voters.

There was no difference between metro and provincial/rural respondents (59%).

Support for the requirement that childcare centres cap fee increases

Half of Australians support the Federal Government's requirement that childcare operators cap fee increases in order to be eligible for pay rise funding. Support is the same for those with (50%) and without (50%) dependents.

Support among Labor and Coalition voters is also the same (56%).

Those aged 18-34 are less supportive than those aged 55+ (39% vs. 63%).

There was no difference between metro and provincial/rural respondents (51% and 50% respectively).

Should the government fund the pay rise or will it be inflationary?

A clear majority of Australians (74%) believe that the Government should fund the pay rise for early childhood educators as they are among the lowest-paid workers, while around one-quarter (26%) believe the Government should not fund the pay rise because it will be inflationary. Greens and Labor voters are more likely to say they believe the pay rise should be funded, 83% and 81% compared to 64% of Coalition voters.

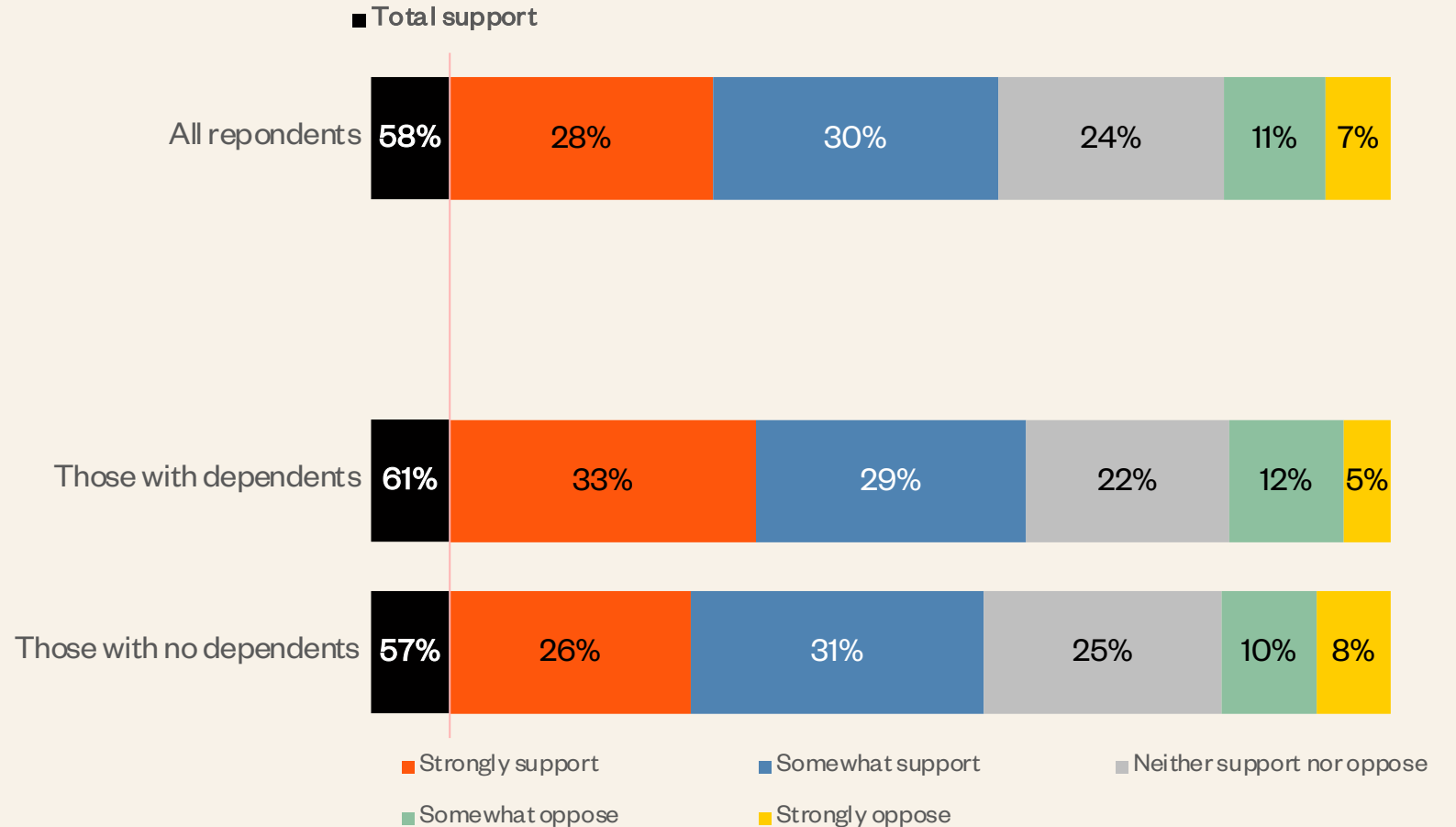
Those who are more likely to say that the Government should fund the pay rise are:

- Women (78%) compared to men (71%),
- Greens (83%) and Labor voters (81%) vs. Coalition voters (64%)

SUPPORT FOR GOVERNMENT FUNDING A 15% PAY RISE FOR EARLY CHILDHOOD EDUCATORS

Six in 10 Australians support the Federal Government funding a 15% pay rise for early childhood educators over the next two years. Support is slightly higher among those with dependents (61%).

Women are slightly more likely to support the pay rise than men (61% vs. 56%). 70% of Greens voters and 64% of Labor voters support the pay rise compared to 52% of Coalition voters.



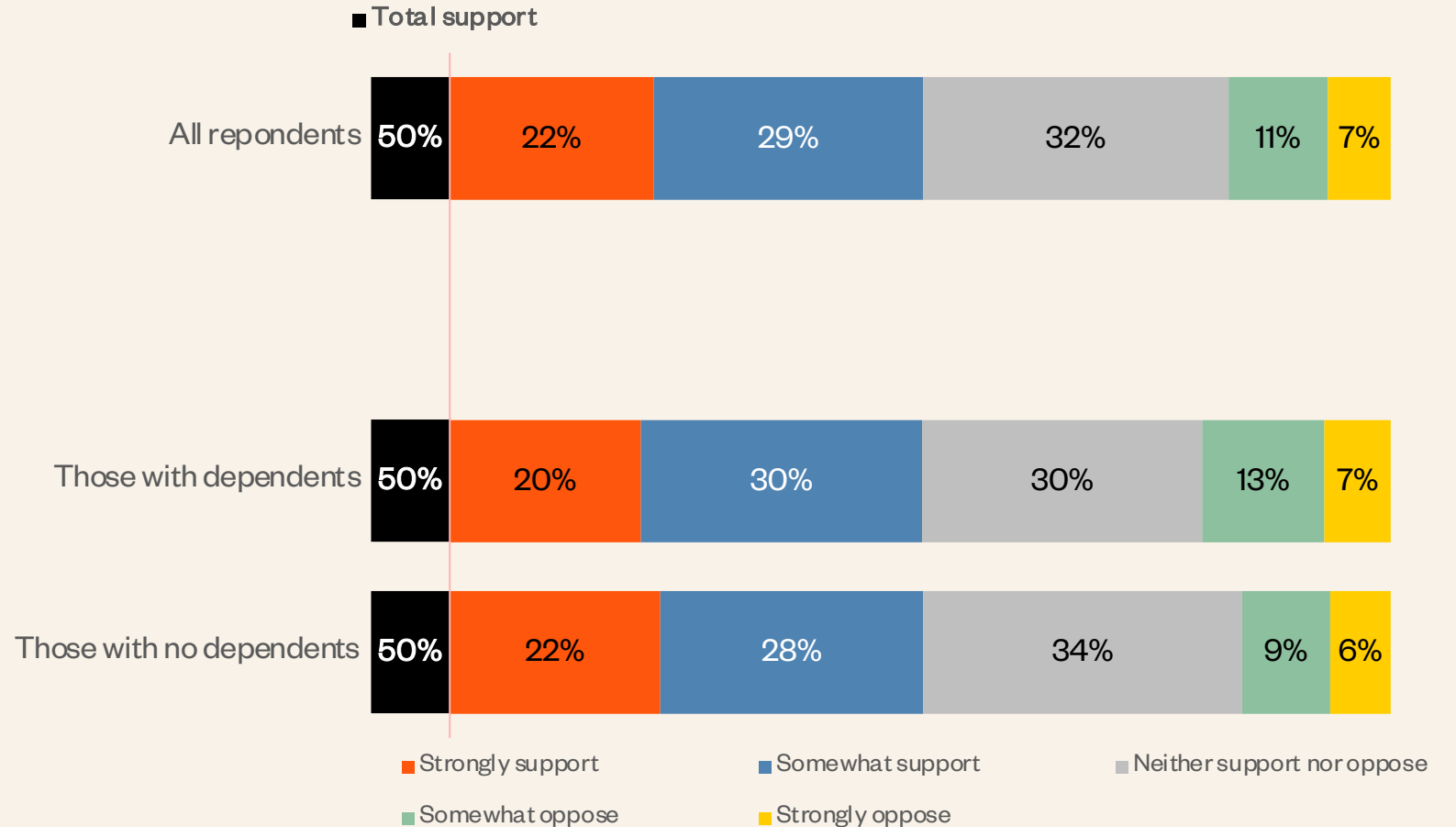
Q. The Federal Government recently announced it will fund a 15% pay rise for childcare workers over the next two years. For an average worker receiving the award rate, the boost will mean an extra \$155 a week by the end of 2025. To what extent do you support or oppose this pay rise?
 All respondents n=1,129
 Those with dependents n=394
 Those with no dependents n=735

SUPPORT FOR CHILDCARE CENTRES HAVING TO COMMIT TO CAPPING THEIR FEE INCREASES

Half of Australians support the Federal Government's requirement that childcare operators cap fee increases in order to be eligible for the pay rise funding.

Support is also the same for Labor and Coalition voters (56%).

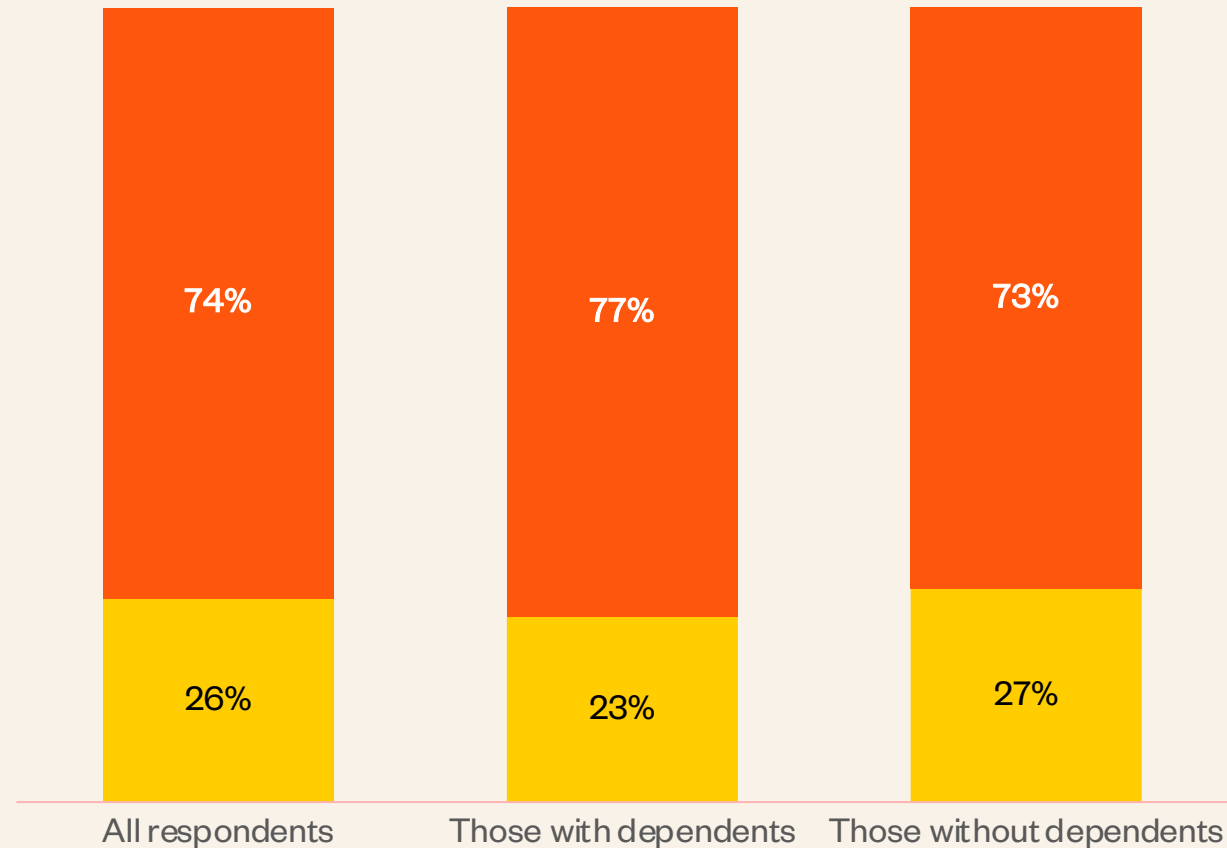
Those aged 18-34 are less supportive than those aged 55+ (39% vs. 63%).



Q For childcare operators to receive this government funding for pay rises, the centres must commit to capping their fee increases to 4.4% over the next 12 months. To what extent do you support or oppose this cap on fee increases?
 All respondents n=1,129
 Those with dependents n=394
 Those with no dependents n=735

SHOULD THE GOVERNMENT FUND THE PAY RISE OR WILL IT BE INFLATIONARY?

A clear majority of Australians (74%) believe that the Government should fund the pay rise for early childhood educators as they are among the lowest-paid workers, while around one-quarter (26%) believe the Government should not fund the pay rise because it will be inflationary.

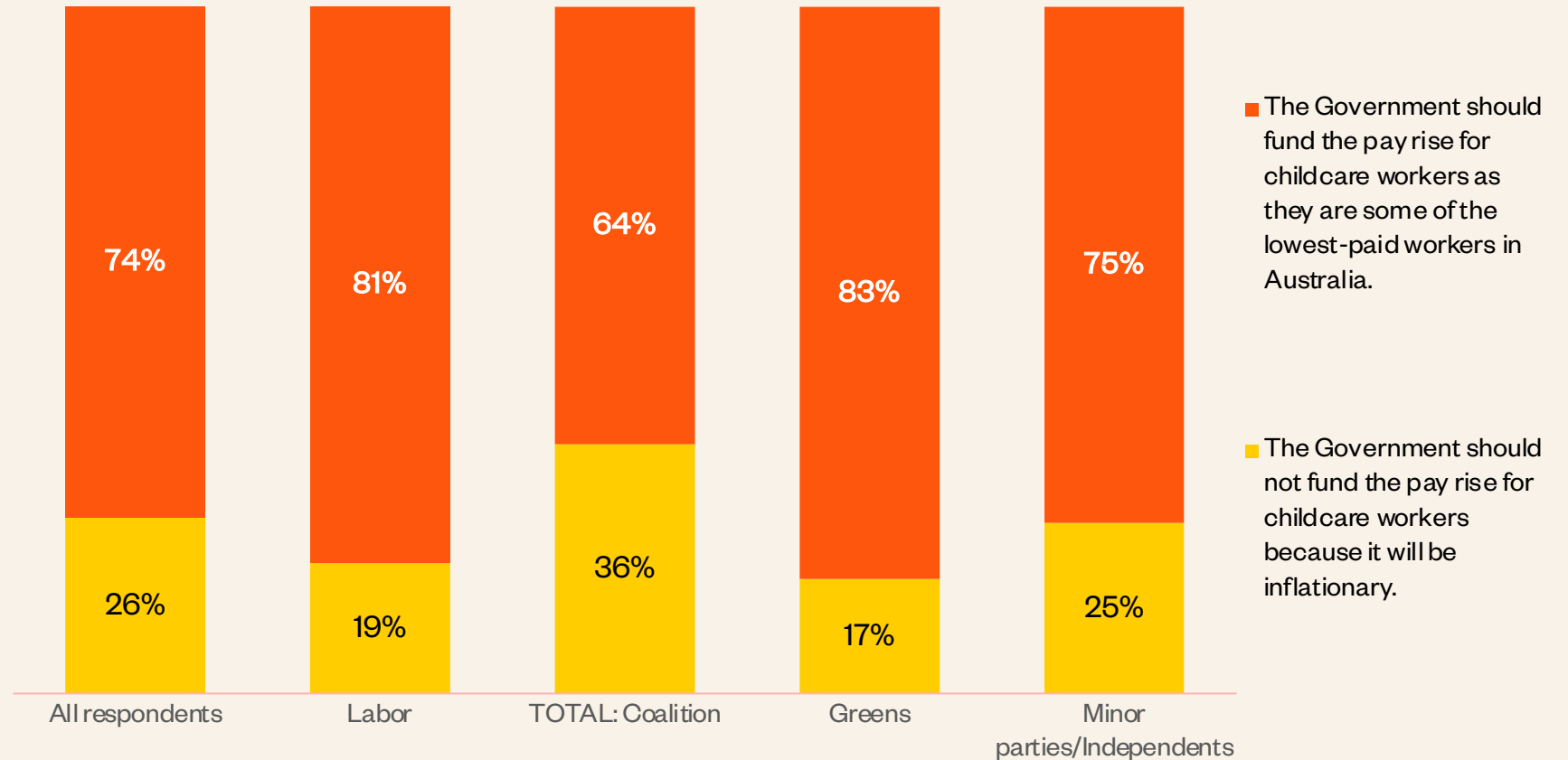


- The Government should fund the pay rise for childcare workers as they are some of the lowest-paid workers in Australia.
- The Government should not fund the pay rise for childcare workers because it will be inflationary.

Q. Which one of the following is closest to your view?
All respondents n=1,129
Those with dependents n=394
Those with no dependents n=735

SHOULD THE GOVERNMENT FUND THE PAY RISE OR WILL IT BE INFLATIONARY?

Greens and Labor voters are more likely to say they believe the pay rise should be funded, 83% and 81% compared to 64% of Coalition voters.



Q. Which one of the following is closest to your view?

All respondents n=1,129

Labor voters n=428, Coalition voters n=339, Greens voters n=128, Minor parties/Independent voters n=136

METHODOLOGY



METHODOLOGY

Fieldwork:

20th and 24th of August 2024

Sample sizes:

All respondents	Those with dependents	Those without dependents
1,129	394	735

Maximum margin of error at a 95% confidence level

<u>±2.9%</u>	<u>±4.9%</u>	<u>±3.6%</u>
--------------	--------------	--------------

Prepared by:

Essential Research

Our researchers are members of the Research Society. This research is compliant with the Australian Polling Council Quality Mark standards.



Australian
Polling Council
Quality Mark

This poll was conducted as part of a fortnightly online omnibus hosted by Qualtrics.

The latest wave of this survey was in the field between the 20th and 24th of August and was completed by n=1,129 respondents aged 18 or over. The maximum margin of error at a 95% confidence level is shown in the table.

Note that the margin of error this assumes random sampling, which, because of non-response and less than 100% population coverage cannot be achieved in practice. Furthermore, there are other possible sources of error in all polls, including question wording and question order, interviewer bias (for telephone and face-to-face polls), response errors and weighting.

Some figures in this report will not total 100% due to rounding.