



THE AUSTRALIAN EARLY LEARNING MONITOR.

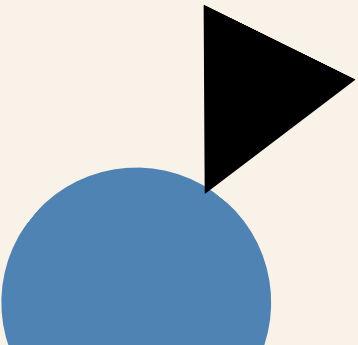
Age results
June 2021.



**THRIVE
BY FIVE**

KEY FINDINGS.

1. Broadly, Australians aged 18-54 are more understanding, supportive and inclined to vote for parties which commit to universal early childhood education and care; than those over 55.
2. However, most Australians over 55 are still supportive and engaged with the issue.
3. Regardless of their age, more than three-quarters of Australians agree early learning should be part of the education system.
4. Another three-fifths agree that cheaper early childhood education and care is good for the economy and more support implementing this policy.
5. More than 86% of 18-54 year olds say that cheaper access to good quality care for under school age children would help their families.
6. Three-quarters say universal high-quality early childhood education and care would make the education system better – two-thirds of under 35 year olds also see the impacts on the economy and social inequality.
7. Half of Australians under 35 (53%) say improving early childhood education and care is important to their vote; and 55% say they would be more likely to vote for a party which committed to this policy.
8. A fifth of those under 55 feel they wouldn't have had to make family or career sacrifices if universal high-quality early childhood education and care was available to them.
9. The older participants are, the more likely it is they will believe the impact early learning can have on children into adulthood.



METHODOLOGY.

Fieldwork: 22nd April – 7th May 2021

Sample: 18-34, n=1,445
35-54, n=1,645
55+, n=1,696

Prepared by: Essential Research

Our researchers are members of the Research Society. This research is compliant with the Australian Polling Council Quality Mark standards.



**Australian
Polling Council
Quality Mark**

The quantitative poll was developed to canvas a representative sample of the Australian public on their views, attitudes and experiences with the early learning and childcare system in Australia, and to understand their views on relevant issues related to family life, working life and society more broadly.

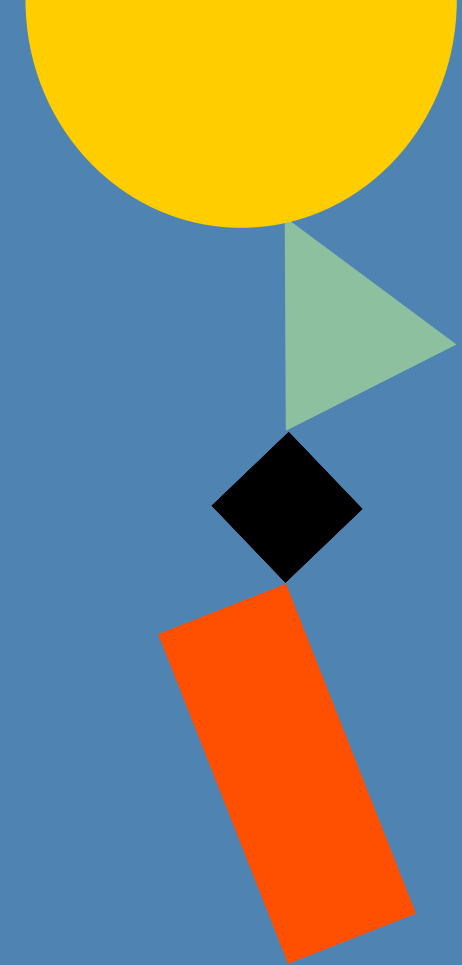
The national online survey was hosted by Qualtrics and took respondents approximately 15 minutes to complete.

Note that some questions were asked of only half the sample to maximise the number of questions without increasing respondent burden.

The maximum margin of error is $\pm 2.6\%$ at a 95% confidence level for the full sample. For questions asked of half sample, maximum margin of error is $\pm 3.7\%$.

Some figures in this report will not total 100% due to rounding. Full methodology can be found [here](#). For more results from the Early Learning Monitor go to: <https://thrivebyfive.org.au/earlylearningmonitor/>

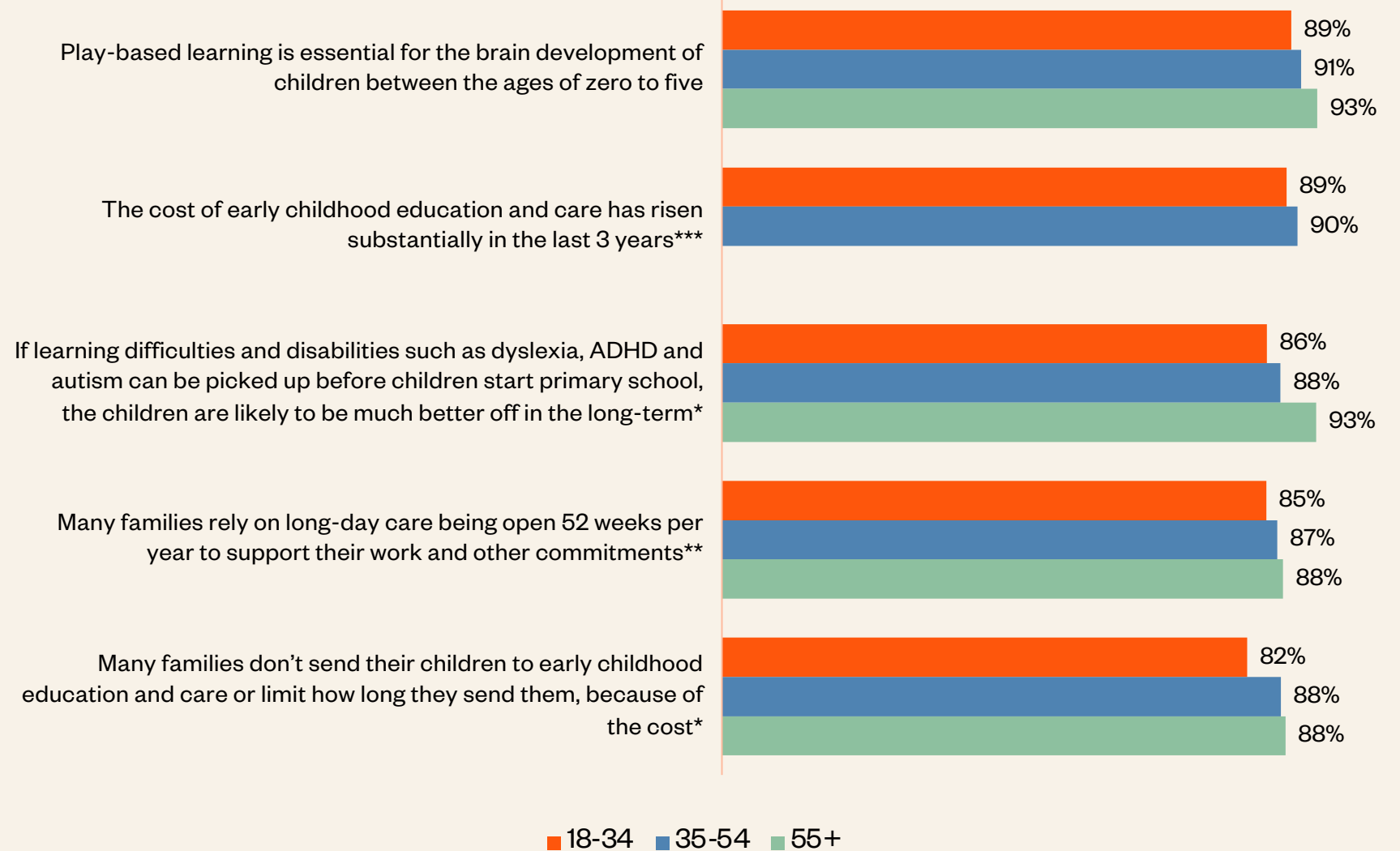
CURRENT ATTITUDES AND BELIEFS.



**THRIVE
BY FIVE**

UNDERSTANDING THE IMPACT OF EARLY LEARNING IS HIGH ACROSS ALL AGE GROUPS, TENDING TO INCREASE WITH THE AGE OF THE PARTICIPANT.

Understanding of the impact of early learning (% Definitely / Probably True)



Q. For each of the following statements about early childhood education and care, please indicate if you think they are definitely true, probably true, probably not true or definitely not true.

Base: 18-34, n=1,445; 35-54, n=1,645; 55+, n=1,696

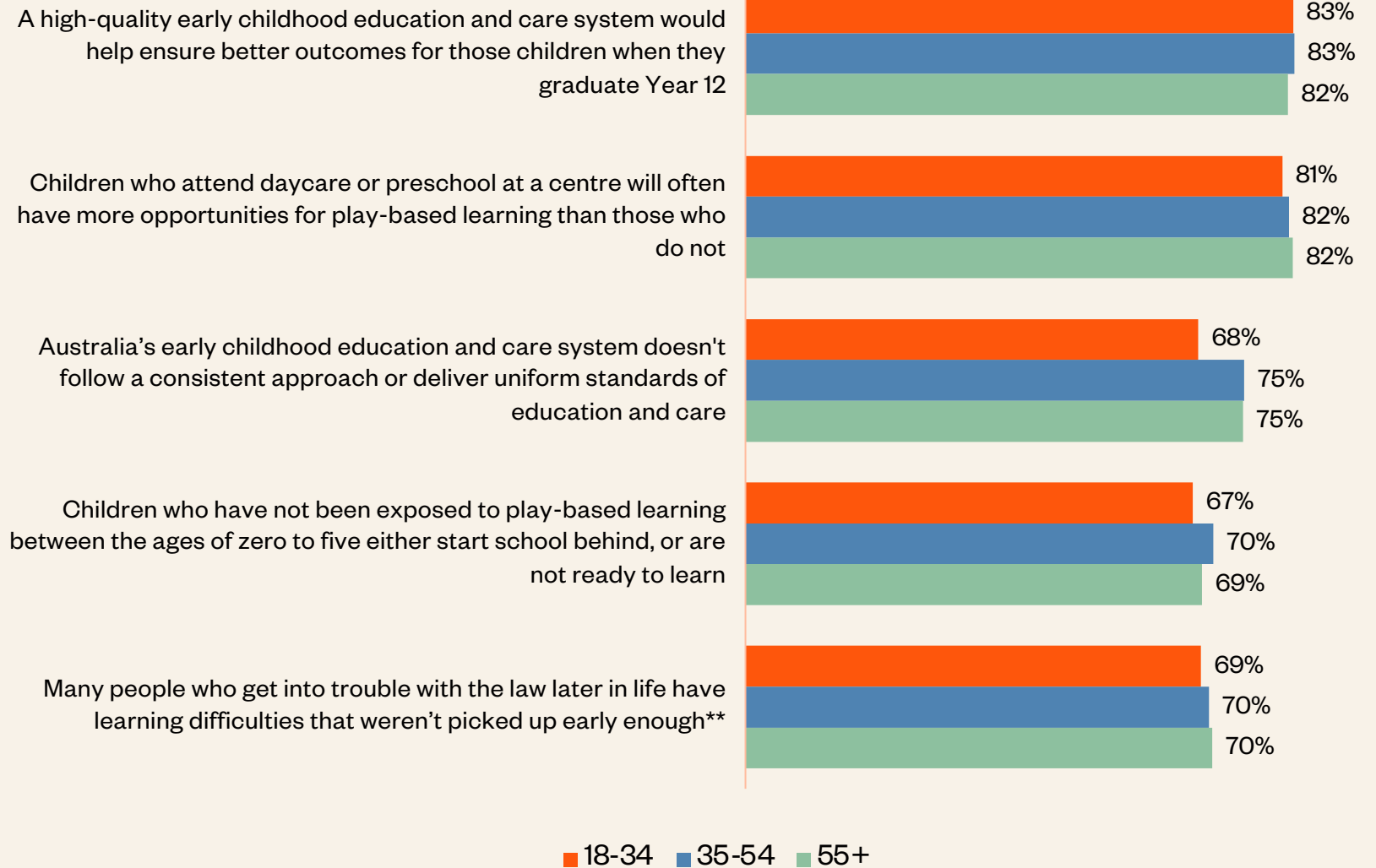
*Only shown to half sample: 18-34, n=717; 35-54, n=827; 55+, n=846

**Only shown to half sample: 18-34, n=728; 35-54, n=818; 55+, n=850

***Only shown to parents with a child that attends/attended daycare 18-34, n=317; 35-54, n=573; Data not shown for 55+ because of small sample size

**AS PARTICIPANTS AGE,
THEY ARE MORE LIKELY
TO UNDERSTAND THE
IMPACT EARLY LEARNING
CAN HAVE INTO
ADULTHOOD.**

Understanding of the impact of early learning (% Definitely / Probably True)



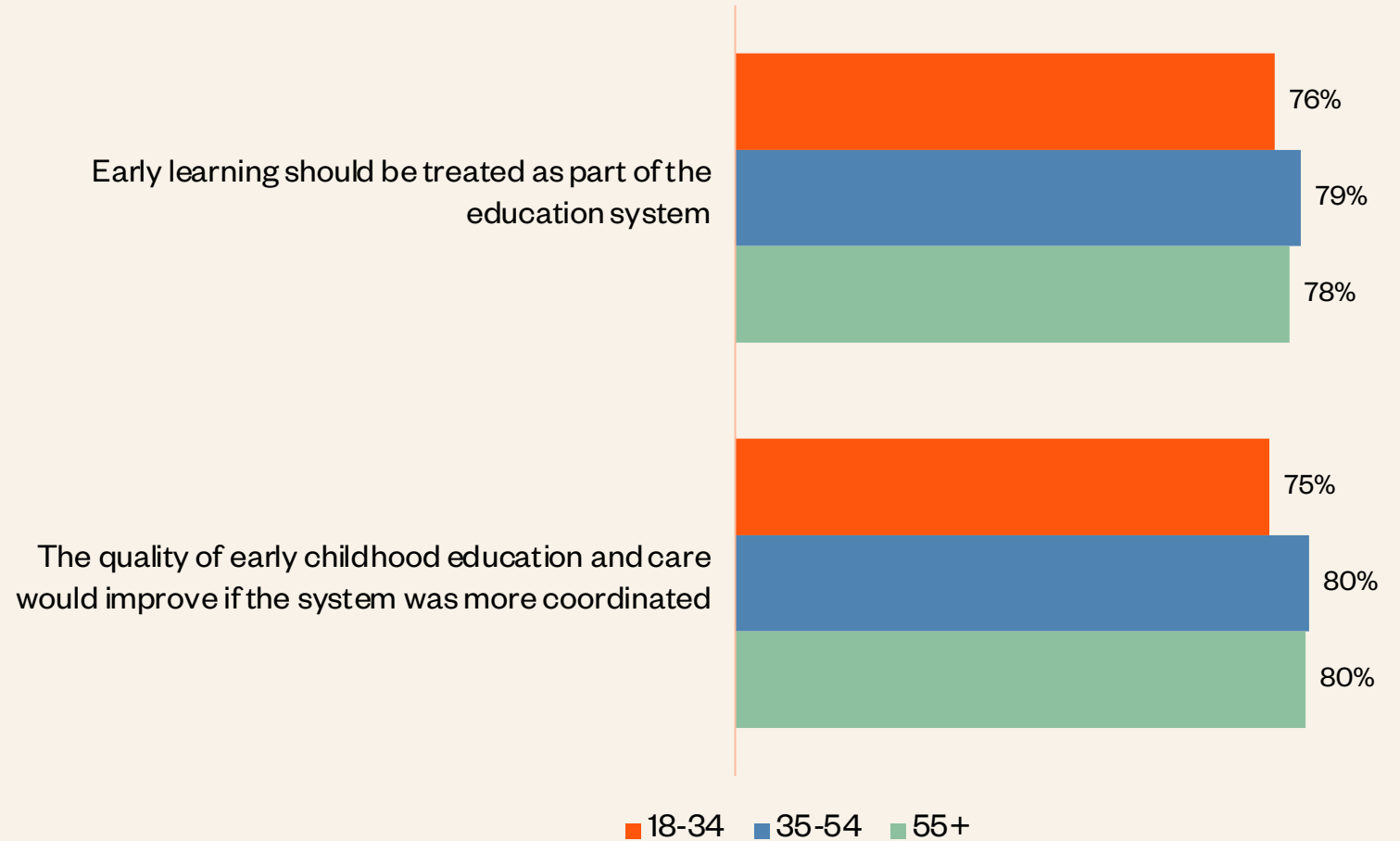
Q. For each of the following statements about early childhood education and care, please indicate if you think they are definitely true, probably true, probably not true or definitely not true.

Base: 18-34, n=1,445; 35-54, n=1,645; 55+, n=1,696

**Only shown to half sample: 18-34, n=728; 35-54, n=818; 55+, n=850

THE MAJORITY OF AUSTRALIANS AGREE THAT THE EARLY LEARNING SYSTEM SHOULD BE PART OF THE EDUCATION SYSTEM AND THE QUALITY OF THE SYSTEM WOULD BE IMPROVED WITH THIS APPROACH.

Total agree with a coordinated future for early learning (% Strongly / Somewhat agree)

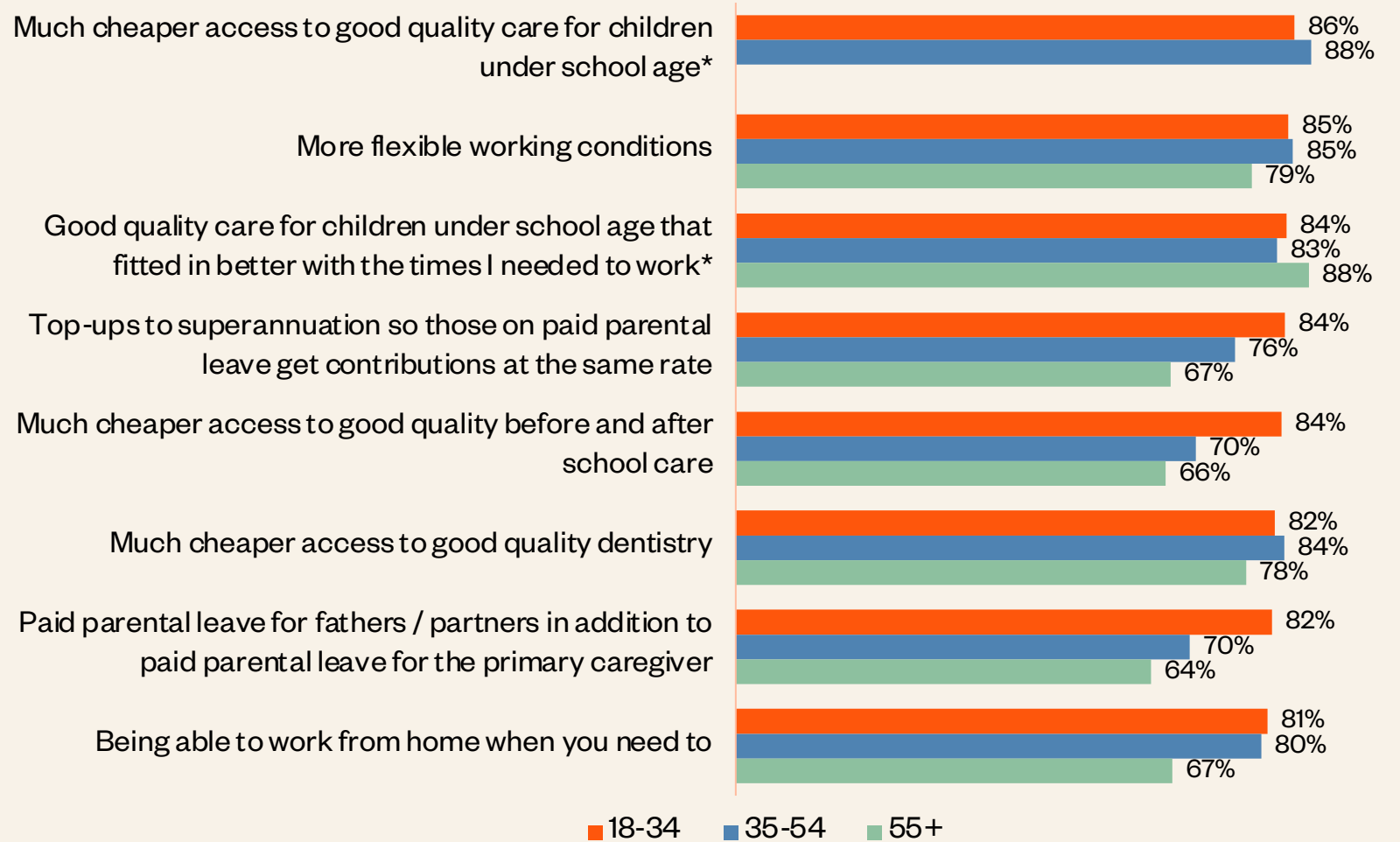


Q. How strongly do you agree or disagree with the following statements?

Base: 18-34, n=1,445; 35-54, n=1,645; 55+, n=1,696

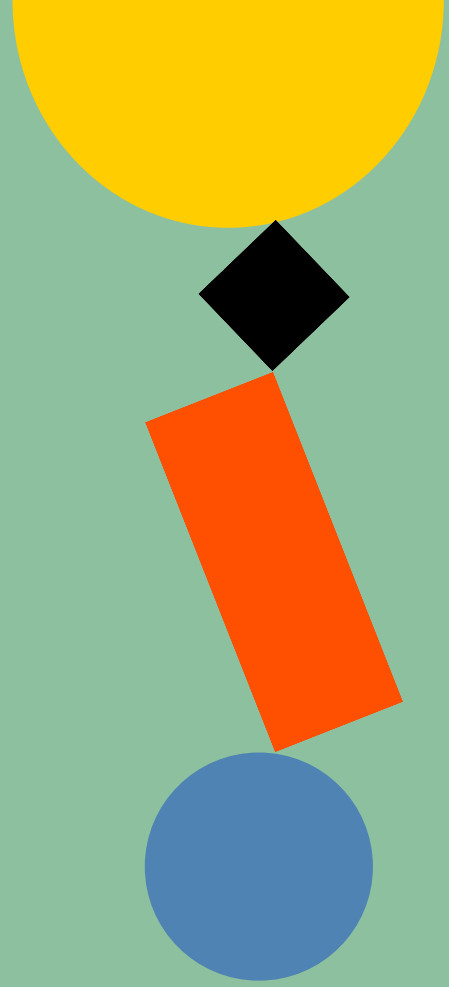
THE MAJORITY OF PARTICIPANTS UNDER 55 SAY CHEAPER ACCESS TO GOOD QUALITY CARE FOR UNDER SCHOOL AGE CHILDREN WOULD HELP THEIR FAMILIES.

**What would help respondents and their families
(% A lot /A fair amount)**



Q. How much would each of the following help you and your family, now or in the future?
 Base: 18-34 year olds with dependent children, n=513; 35-54 year olds with dependent children, n=938; 55+ year olds with dependent children, n=68
 *Only shown to parents with at least one child under school age: 18-34, n= 373; 35-54, n=290; Data not shown for 55+

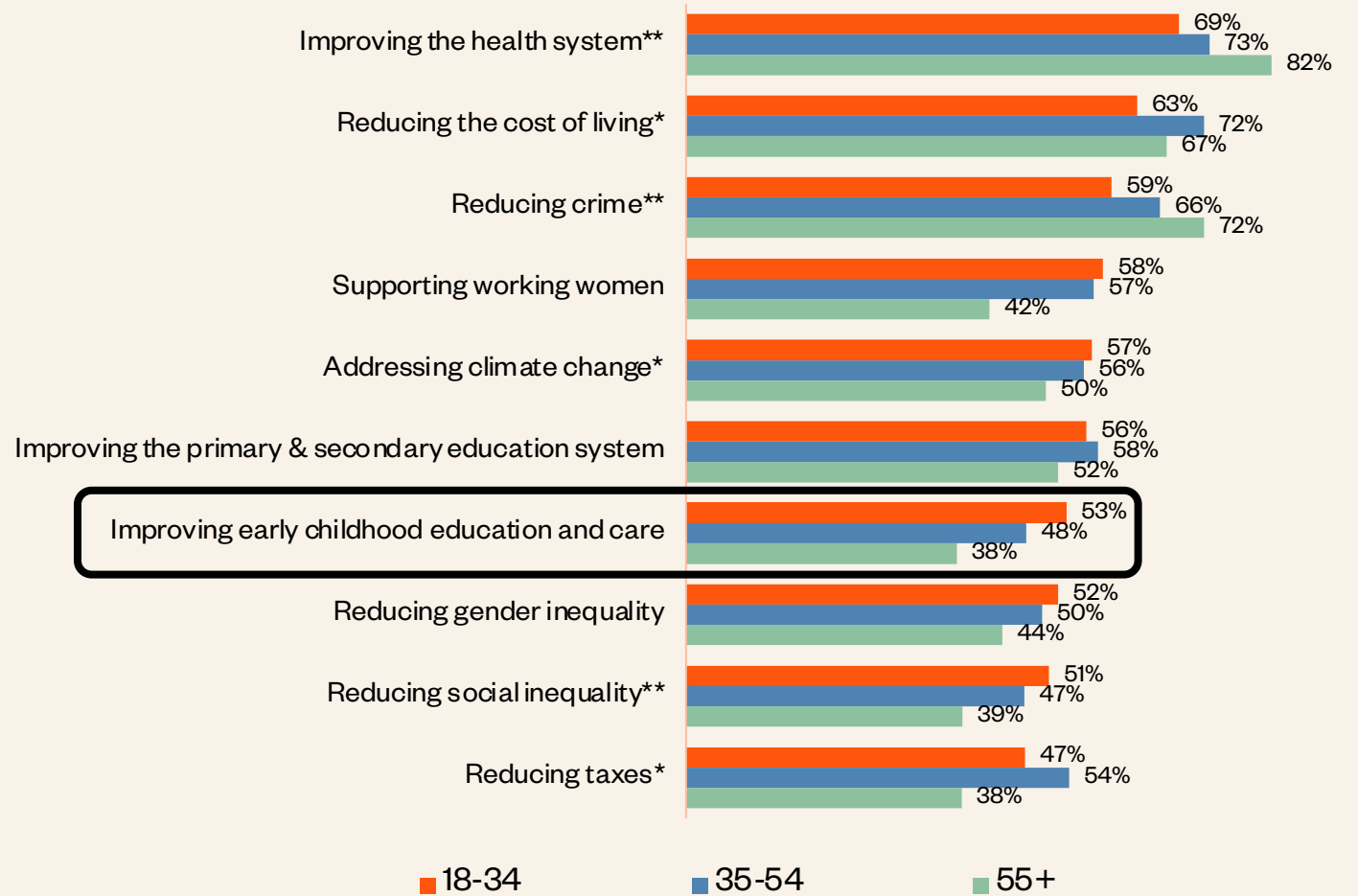
**TOWARDS A UNIVERSAL,
HIGH-QUALITY EARLY
LEARNING SYSTEM.**



**THRIVE
BY FIVE**

IMPROVING THE EARLY CHILDHOOD EDUCATION AND CARE SYSTEM IS MORE IMPORTANT TO AUSTRALIANS UNDER 35 VOTES AT FEDERAL ELECTIONS.

**Importance of issues when voting at federal elections
(% Extremely/very important)**



Q. How important are each of the following issues when it comes to voting at federal elections?

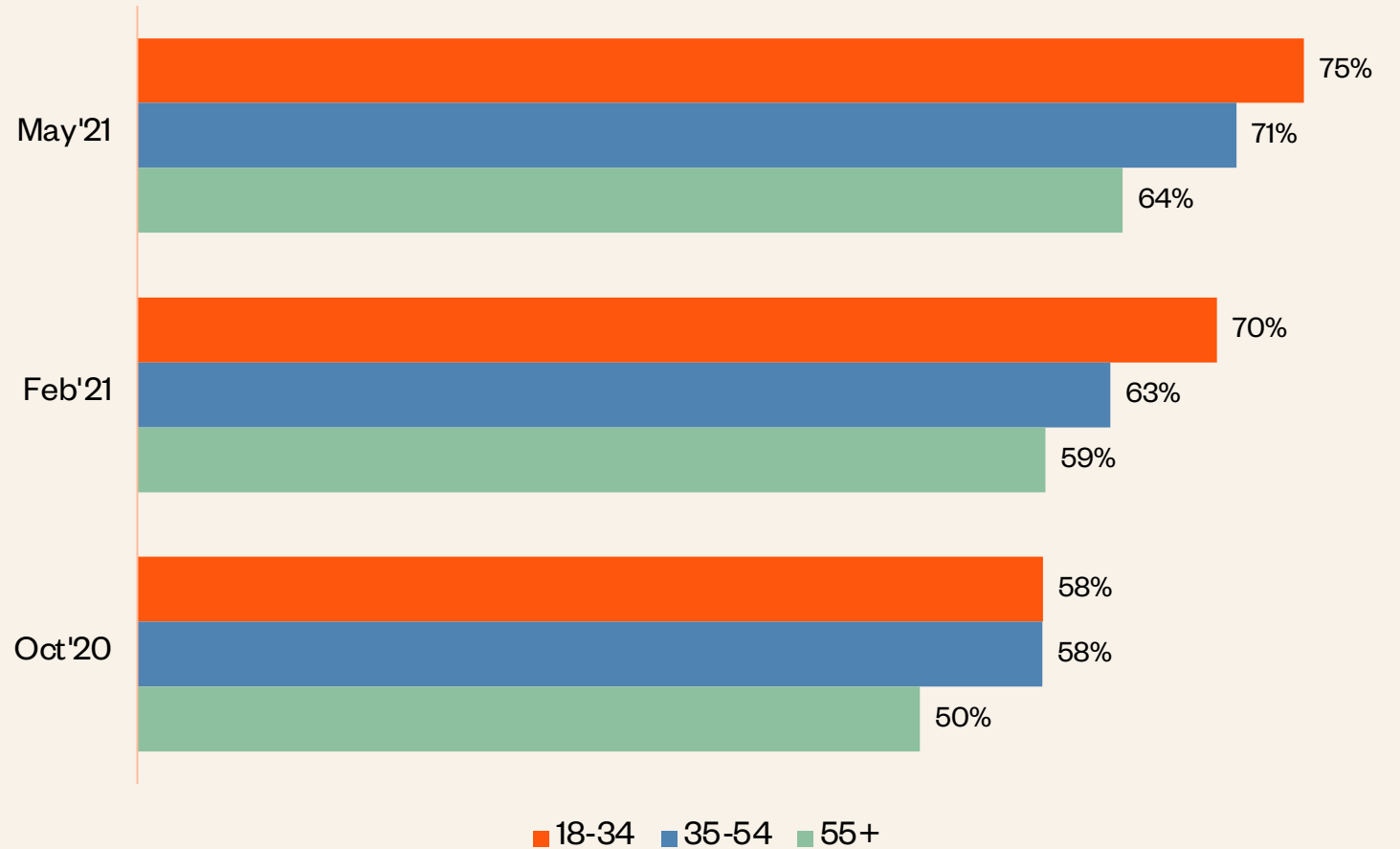
Base: 18-34, n=1,445; 35-54, n=1,645; 55+, n=1,696

*Only shown to half sample: 18-34, n=717; 35-54, n=827; 55+, n=846

**Only shown to half sample: 18-34, n=728; 35-54, n=818; 55+, n=850

**AGREEMENT THAT
CHEAPER EARLY
CHILDHOOD EDUCATION
WOULD BE GOOD FOR THE
ECONOMY, STEADILY
INCREASED AMONGST
ALL AGE GROUPS.**

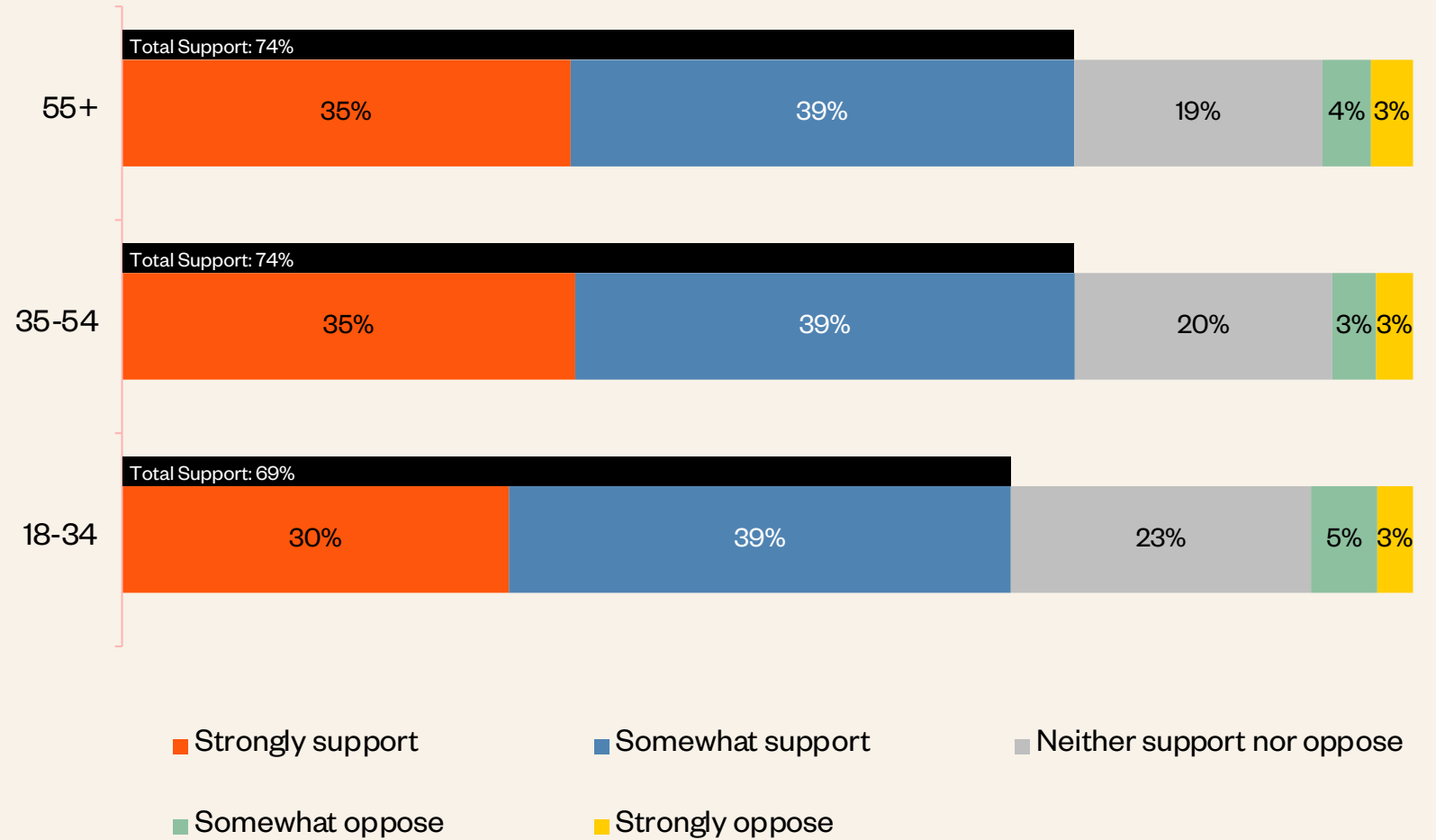
Agreement that cheaper early childhood education and care would be very good for the Australian economy as a whole (% Strongly / Somewhat agree)



Q. To what extent do you agree or disagree with the following statement?
Base May'21: 18-34, n=1,445; 35-54, n=1,645; 55+, n=1,696
Base Feb'21: 18-34, n=326; 35-54, n=363; 55+, n=385
Base Oct'20: 18-34, n=159; 35-54, n=180; 55+, n=198

TWO-THIRDS OF AUSTRALIANS AT ANY AGE, SUPPORT THIS POLICY.

Support for a universal high-quality early childhood education and care system (%)

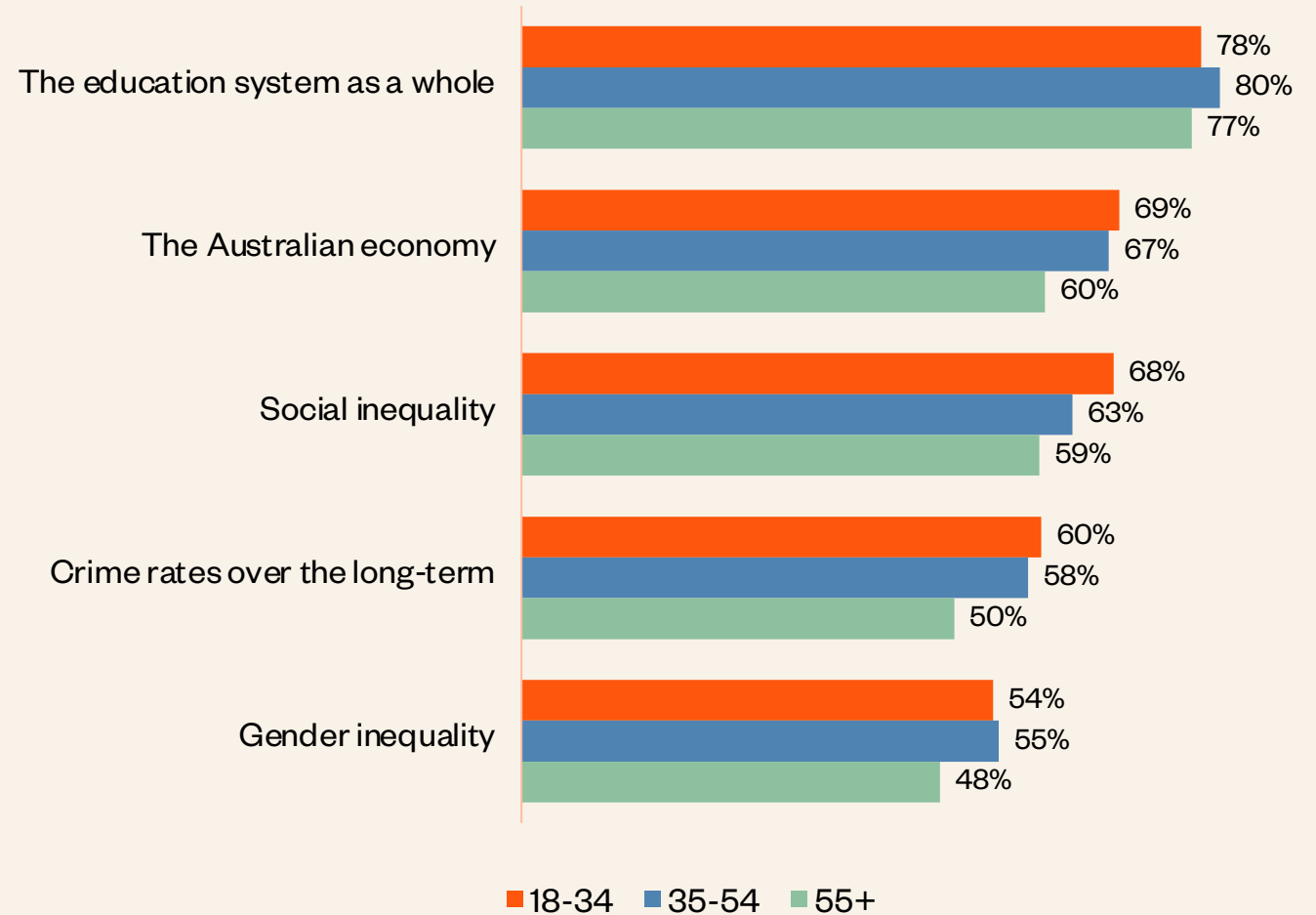


Q. For the purpose of the next few questions, please assume that 'a universal high-quality early childhood education and care system' would be one that was connected to the primary and secondary education system with a standard set of teaching priorities based around play-based learning. The system would be available at low or minimal cost to anyone who wants to use it, but using it would not be compulsory. How strongly do you support or oppose introducing a universal high-quality early childhood education and care system along those lines?

Base: 18-34, n=1,445; 35-54, n=1,645; 55+, n=1,696

MOST AUSTRALIANS THINK A UNIVERSAL EARLY LEARNING SYSTEM WOULD BE GOOD FOR THE EDUCATION SYSTEM AS A WHOLE - HOWEVER - PARTICIPANTS UNDER 35 ALSO SEE THE EFFECTS ON THE ECONOMY AND SOCIAL INEQUALITY.

Effect of universal high-quality early childhood education and care system (% Make it a lot/a little better)

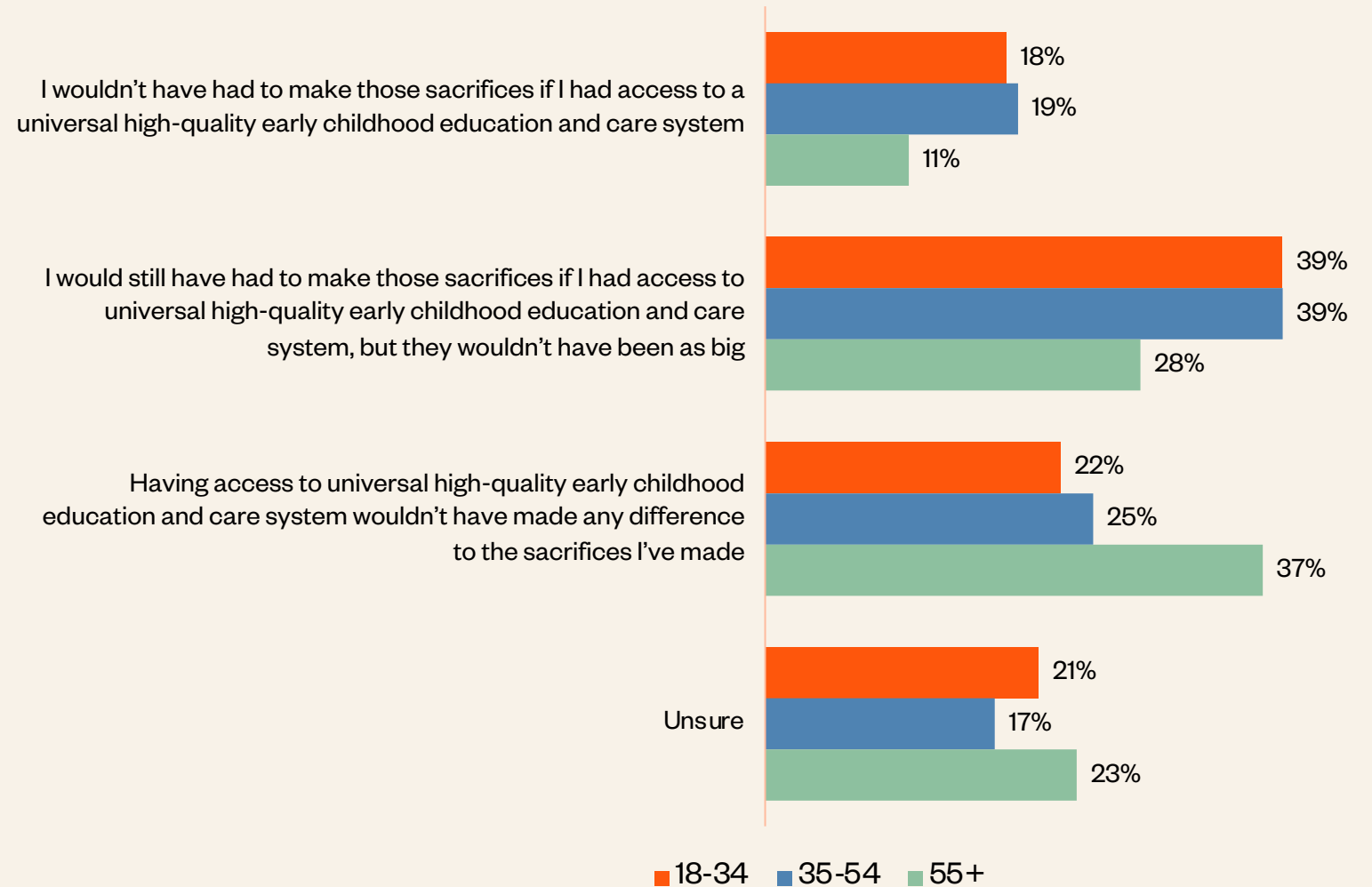


Q. If there was a universal high-quality early childhood education and care system, how do you think it would affect each of the following?

Base: 18-34, n=1,445; 35-54, n=1,645; 55+, n=1,696

ONE IN FIVE AUSTRALIANS UNDER 55 SAY THEY WOULD NOT HAVE MADE FAMILY OR CAREER SACRIFICES IF THEY HAD ACCESS TO UNIVERSAL HIGH-QUALITY EARLY CHILDHOOD EDUCATION AND CARE.

Views towards career/family sacrifices made (%)

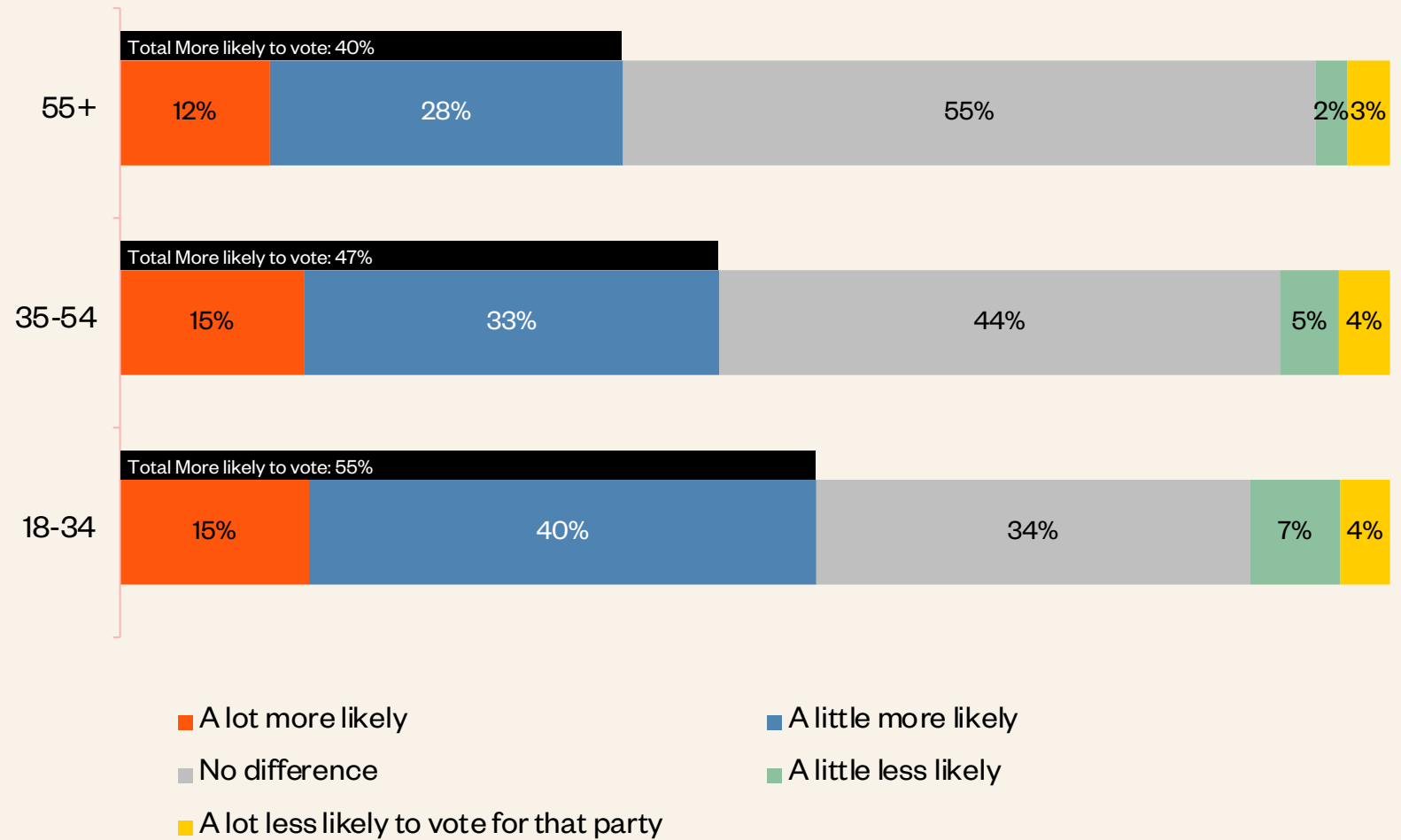


Q. You said earlier that you had made sacrifices in your career for your family or in your family life for your career. Which of the following do you think would have applied to you had you access to a universal high-quality early childhood education and care system?

Base: Respondents who strongly/somewhat agree that they have made career or family sacrifices 18-34, n=862; 35-54, n=1,128; 55+, n=997

55% OF UNDER 35 YEAR OLDS SAY THIS POLICY WOULD MAKE THEM MORE LIKELY TO VOTE FOR A PARTY COMMITTING TO IT.

Influence of a universal ECE and care policy on voting intention (%)



Q. If a party committed to introducing a universal high-quality early childhood education and care system, how would that affect your likelihood of voting for that party?

Base: 18-34, n=1,445; 35-54, n=1,645; 55+, n=1,696